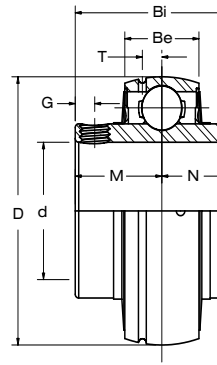


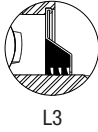
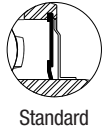
UC 200 SERIES

Normal-Duty Ball Bearing
Setscrew Lock

TURNER
Mounted Bearings



Available Seal Styles:



Bearing Insert	Shaft Dia. d in. mm.	Setscrew Used in. mm.	Dimensions in. mm.							Load Rating lbs. kN.		Weight lbs. kg.
			D	Bi	Be	N	M	G	T	Dynamic C _r	Static C _{0r}	
UCW 201	12	M5x0.8	1.5748 40.0	1.0787 27.4	0.5512 14.0	0.4528 11.5	0.6260 15.9	0.1614 4.12	0.1614 4.1	2,147 9.55	1,075 4.78	0.2 0.1
UCW 201-8	1/2	10-32										
UCW 202	15	M5x0.8										
UCW 202-10	5/8	10-32										
UCW 203	17	M5x0.8	1.8504 47.0	1.2205 31.0	0.6693 17.0	0.5000 12.7	0.7205 18.3	0.1969 5.0	0.1693 4.3	2,147 9.55	1,075 4.78	0.4 0.2
UC 201	12	M6 x 1										
UC 201-8	1/2	1/4-28										
UC 202	15	M6 x 1										
UC 202-10	5/8	1/4-28	1.8504 47.0	1.2205 31.0	0.6693 17.0	0.5000 12.7	0.7205 18.3	0.1969 5.0	0.1693 4.3	2,883 12.82	1,496 6.65	0.4 0.2
UC 203	17	M6 x 1										
UC 204-12	3/4	1/4-28										
UC 204	20	M6 x 1										
UC 205-14	7/8	1/4-28	2.0472 52.0	1.3425 34.1	0.6693 17.0	0.5630 14.3	0.7795 19.8	0.2126 5.4	0.1575 4.0	3,155 14.04	1,810 8.05	0.5 0.2
UC 205-15	15/16	1/4-28										
UC 205	25	M6 x 1										
UC 205-16	1	1/4-28										
UC 206-17	1 1/16	1/4-28	2.4409 62.0	1.5000 38.1	0.7480 19.0	0.6260 15.9	0.8740 22.2	0.2165 5.5	0.2087 5.3	4,377 19.47	2,569 11.43	0.7 0.3
UC 206-18	1 1/8	1/4-28										
UC 206	30	M6 x 1										
UC 206-19	1 3/16	1/4-28										
UC 206-20	1 1/4	1/4-28	2.8346 72.0	1.6890 42.9	0.7874 20.0	0.6890 17.5	1.0000 25.4	0.2717 6.9	0.2283 5.8	5,775 25.69	3,497 15.56	1.1 0.5
UC 207-20	1 1/4	5/16-24										
UC 207-21	1 5/16	5/16-24										
UC 207-22	1 3/8	5/16-24										
UC 207	35	M8 x 1	3.1496 80.0	1.9370 49.2	0.8268 21.0	0.7480 19.0	1.1890 30.2	0.3150 8.0	0.2441 6.2	6,634 29.51	4,079 18.14	1.4 0.6
UC 207-23	1 7/16	5/16-24										
UC 208-24	1 1/2	5/16-24										
UC 208-25	1 9/16	5/16-24										
UC 208	40	M8 x 1	3.3465 85.0	1.9370 49.2	0.8661 22.0	0.7480 19.0	1.1890 30.2	0.3150 8.0	0.2559 6.5	7,160 31.85	4,676 20.80	1.6 0.7
UC 209-26	1 5/8	5/16-24										
UC 209-27	1 11/16	5/16-24										
UC 209-28	1 3/4	5/16-24										
UC 209	45	M8 x 1	3.5433 90.0	2.0315 51.6	0.9449 24.0	0.7480 19.0	1.2835 32.6	0.3937 10.0	0.2756 7.0	7,867 35.00	5,330 23.71	1.8 0.8
UC 210-30	1 7/8	3/8-24										
UC 210-31	1 15/16	3/8-24										
UC 210	50	M10 x 1.25										
UC 210-32	2	3/8-24	3.9370 100.0	2.1890 55.6	0.9843 25.0	0.8740 22.2	1.3150 33.4	0.3937 10.0	0.2913 7.4	9,743 43.34	6,608 29.40	2.4 1.1
UC 211-32	2	3/8-24										
UC 211-34	2 1/8	3/8-24										
UC 211	55	M10 x 1.25										
UC 211-35	2 3/16	3/8-24	4.3307 110.0	2.5630 65.1	1.0630 27.0	1.0000 25.4	1.5630 39.7	0.3937 10.0	0.2992 7.6	10,720 47.69	7,516 33.43	3.3 1.5
UC 212-36	2 1/4	3/8-24										
UC 212	60	M10 x 1.25										
UC 212-38	2 3/8	3/8-24										
UC 212-39	2 7/16	3/8-24	4.7244 120.0	2.5630 65.1	1.1024 28.0	1.0000 25.4	1.5630 39.7	0.3937 10.0	0.33504 8.5	12,859 57.20	8,994 40.01	4.2 1.9
UC 213	65	M10 x 1.25										
UC 214-43	2 11/16	7/16-20										
UC 214-44	2 3/4	M12 x 1.25										
UC 214	70	7/16-20	5.1181 130.0	3.0630 77.8	1.1811 30.0	1.3110 33.3	1.7520 44.5	0.4724 12.0	0.3622 9.2	14,974 66.61	10,757 47.85	5.1 2.3
UC 215-47	2 15/16	7/16-20										
UC 215	75	M12 x 1.25										
UC 215-48	3	7/16-20										